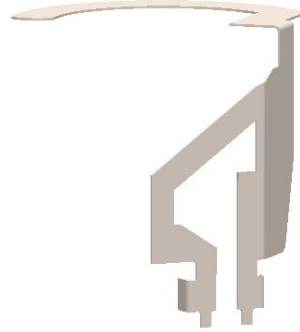


## WPANT10091-S1A

### 900MHz ISM band Embedded Antenna



### Application

This ISM band stamped metal antenna has a very compact structure, and can be easily installed on a circuit board inside any wireless device. The antenna is at DC ground to ensure protection against lightning.

We can assist your engineers to optimize mounting positions for these antennas in your specific application and can further assist to trouble shoot system integration issues such as TRP/TIS and FCC requirements. We specialize in developing customized Antenna solutions. Please contact [sales@worldproducts.com](mailto:sales@worldproducts.com) with your specific application requirements.

### Electrical Properties

<b>Operating Frequency</b>	860 – 930 MHz
<b>VSWR (Typical)*</b>	< 3:1
<b>Peak Gain [dBi] (Typical)*</b>	0 to 1 dBi
<b>Efficiency [%] (Typical)*</b>	65 %
<b>Pattern</b>	Near Omni-directional
<b>Lightning Protection</b>	DC Ground

\*Note: These performance metrics are recorded with the Antenna placed in a particular device. Any modifications with regards to the application / use of this antenna may change antenna performance characteristics.

### Mechanical / Environmental Properties

<b>Antenna Dimensions</b>	1.8" Height X 0.028" Thickness (46mm X 0.711mm)
<b>Antenna Base Material</b>	0.028" thick cold rolled steel
<b>Antenna Surface Plating</b>	Post plated tin, minimum 5.4 microns
<b>Operating / Storage Temperature</b>	-40°C to +125°C
<b>Environmental</b>	Meets standards for UL 94V-0
<b>Hazardous Materials</b>	RoHS Compliant

### Picture of the Antenna

